

MIDAS - Bond Opportunities B - Acc

Monthly summary report | as at 31 October 2018

Investment Objective

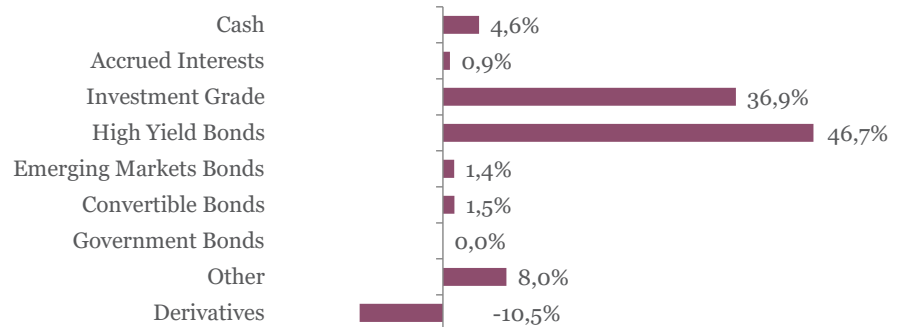
The fund seeks to achieve capital appreciation over the medium term by investing in a diversified portfolio of Euro-denominated fixed income securities (investment-grade corporate bonds, government bonds, high yield and emerging market debt as well as convertible bonds). The main focus is put on bottom-up selection. Interest rate as well as credit risks are managed actively.

Latest Update		Performance	1M	YTD	2017	2016	2015	3Y	5Y
NAV per share	128,72	Midas Bond Opp.	-0,98%	-1,89%	4,87%	4,11%	0,01%	6,13%	13,25%
2018 year-to-date return as at 31 Oct 2018	-1,89%								

Fund key facts

Inception date*	17 September 2010
ISIN code	LU0541880133
Asset class	Bonds in EUR
Total fund assets	€ 138 million
Base currency	EUR
Legal status	Luxembourg UCITS
Management Fee	0,75%
Custodian	Crédit Suisse Lux
Liquidity	Daily
Settlement Date	Trade Date + 2 Days

Asset Allocation

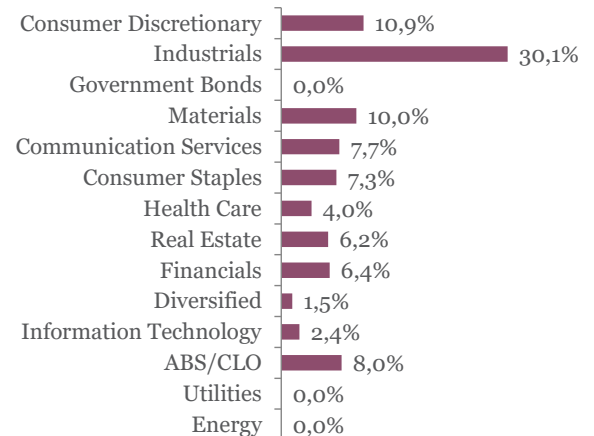


Top 10 bond holdings

	YTM	Rating	Weight
PROMONTORIA : PRMHL D 6 3/4 08/15/25	6,2%	B	2,2%
EL CORTE INGLES : CRTING 3 03/15/24	2,8%	BB+	2,2%
GLENCORE FINANCE : GLENLN 1 7/8 09/15/24	1,8%	BBB+	2,2%
SIXT SE : SIXT 1 1/2 02/21/24	1,4%	NR	2,2%
PRYSMIAN SPA : PRYIM 2 1/2 04/11/22	2,5%	NR	2,2%
BENI STABILI : BNSIM 1 5/8 10/17/24	1,7%	BBB-	2,2%
JUBIL 2014-11X DR : JUBIL 2014-11X DR	1,6%	BBB	2,2%
COTY INC : COTY 4 04/15/23	4,5%	B+	2,1%
ALTICE LX : ATCNA 7 1/4 05/15/22	8,0%	B-	2,1%
SUNSHINE MID : SUNSHM 6 1/2 05/15/26	7,0%	CCC+	2,1%

*Cash & Cash Equivalents

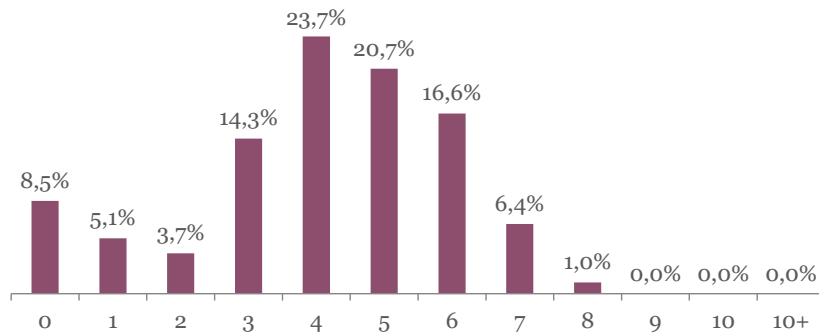
Sector breakdown



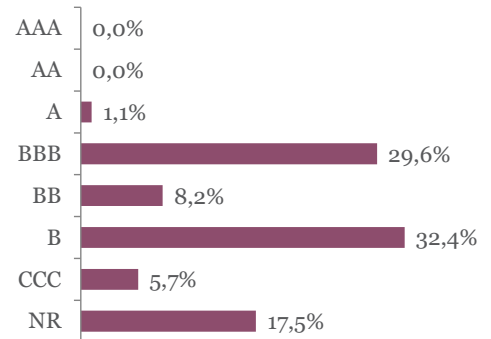
MIDAS - Bond Opportunities B - Acc

Monthly summary report | as at 31 October 2018

Duration breakdown



Rating breakdown



Top funds holdings

MM Convertible Europe Convertible Bonds 1,5%

Market Review

Financial markets declined in October, with the resurgence of macro and political risks (cooling Global economy, Trade war, Italian budget, Brexit deadline). In this “risk-off” mode, safe havens outperformed risky assets.

The German 10Y yield declined by 9bps to 0.39%. The front end of the curve also dropped, as probability of a first rate increase by the ECB receded. The Italian 10Y spread to Germany widened sharply (+37bps to 304bps) as its government defied the European Commission on the 2019 budget deficit. Corporates followed the equity sell-off, as Investment Grade and High Yield spreads increased by 5 and 23bps respectively on the iTraxx Main and Crossover indices.

Portfolio Performance

The fund lost 0,98% in October. Performance was negatively impacted by some High Yield names (especially single B), which suffered from credit spread widening (Atalian, Thomas Cook, CMA CGM, Nouryon). Convertible bonds also contributed negatively. Conversely, we gained from the long Bund future position initiated recently.

During the month, we took profit on some outperformers (Orpea, Bureau Veritas, Infopro) to reinforce others that underperformed (Coty, Nouryon). We also reduced exposure to deteriorating credit profiles, namely But, CBR Fashion and Ingenico. We closed our tactical Emerging markets debt exposure after the recent rebound.

Market Outlook

We acknowledge markets reacted to the cooling economy. However, we still believe fundamentals remain robust (supportive monetary policies, dynamic US growth, resilient European economy) with possible short-term positive outcomes (discussions between US and China, Brexit deal) that should support risky assets.

Consequently, while we stick to our bias towards BBB and HY names which offer attractive yields (fund yield to worst=3,65%), we are becoming more and more selective. Moreover, as interest rate risk receded, we are eager to take slightly more duration (fund duration to worst=4.29).

This newsletter does not constitute an offer to sell or the solicitation of an offer to purchase any security or investment product. Information herein is believed to be reliable but Midas Wealth Management does not warrant its completeness or accuracy. The opinions expressed within are entirely those of Midas Wealth Management and do not constitute an offer of investment advice. Past performance will not necessarily be repeated and is not indicative of future results. The investments discussed may fluctuate in price or value and you may not get back the amount invested. The indices shown are presented only to allow for comparison of the Midas Wealth Management funds' performance to that of certain widely recognised indices. The volatility of the indices may be materially different from the individual performance attained by a specific fund or investor. In addition, the Midas Wealth Management fund holdings may differ significantly from the securities that comprise the indices shown. Investors cannot invest directly in an index. Performance figures reflect the reinvestment of all dividends and earnings, as well as investment management, administration and performance fees. A description of the specific fee structure and risks of investing for each Midas Wealth Management fund is contained in the fund's prospectus. No part of this document may be reproduced in any manner without the prior written permission of Midas Wealth Management.

* Performance has been calculated since inception on the 17th of September 2010 of Expert Investor Sicav Midas Bond Opportunities Fund which merged into Midas Sicav Bond Opportunities Fund on the 1st of August 2016.