

Patrimonial SRI Fund B - Acc

Monthly summary report | as at 30 September 2022

Signatory of:



Investment Objective

The fund seeks to achieve capital appreciation over the medium to long-term by investing in a diversified portfolio of primarily fixed income and equity securities (or related instruments). The fund will at all times be at least 40% invested in bonds while the remaining will be invested according to market opportunities. The fund may also be indirectly invested in commodities (including precious metals) and related thematic plays.

Latest Update

NAV per share	152.20
2022 year-to-date return as at 30 September 2022	-13.03%

Performance

	1M	YTD	2021	2020	2019	3Y	SI
Midas Patrimonial	-3.41%	-13.03%	10.77%	2.40%	12.81%	1.45%	52.20%

Fund key facts

Inception date *	17 September 2010
ISIN code	LU0541884556
Asset class	Diversified
Total fund assets	€258.0 million
Base currency	EUR
Legal status	Luxembourg UCITS
Management Fee	0.78%
Custodian	Crédit Suisse Lux
Liquidity	Daily
Settlement Date	Trade Date + 2 Days
SFDR	Article 8

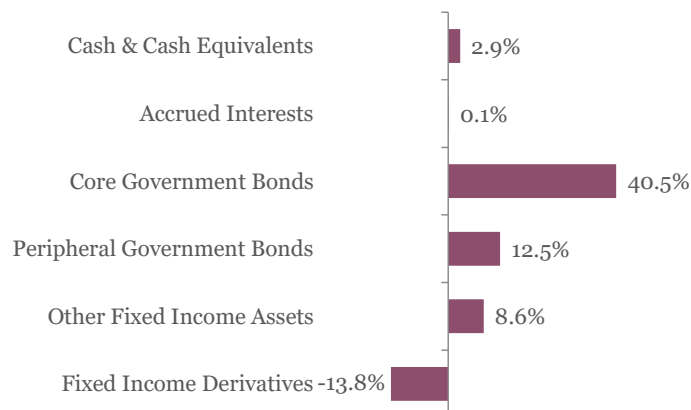
Asset Allocation



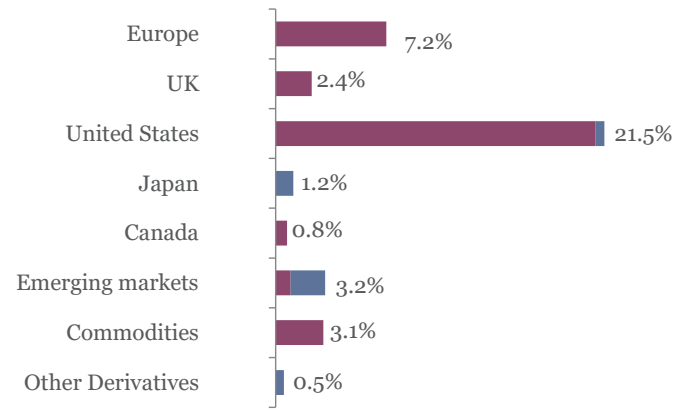
Currencies

	USD	JPY	GBP	CHF	Other
Exposure	28.8%	1.1%	1.3%	0.9%	1.3%

Fixed income asset allocation



Equity and other securities asset allocation



■ Direct Exposure ■ Equity Derivatives

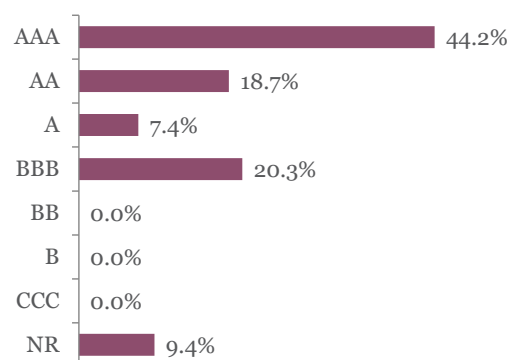
Patrimonial SRI Fund B - Acc

Monthly summary report | as at 30 September 2022

Top 10 fixed income holdings

	Rating	Weight
LUXEMBOURG GOVT : LGB 2 1/8 07/10/23	AAA	5.8%
DEUTSCHLAND REP : DBR 0 02/15/32	AAA	4.5%
FRANCE O.A.T. : FRTR 0 1/2 05/25/25	AA	4.5%
BTPS : BTPS 0 11/29/23	BBB-	3.8%
TREASURY BILL : B 12/08/22	AAA	3.5%
BTPS : BTPS 0.35 02/01/25	BBB-	3.3%
ABSOLUTE SECURED : ABTSEC 4 01/15/25	NR	3.3%
BUNDESSCHATZANW : BKO 0 06/16/23	AAA	3.1%
SPANISH GOVT : SPGB 0 01/31/26	BBB+	2.5%
FRANCE O.A.T. : FRTR 0 02/25/24	AA	2.3%

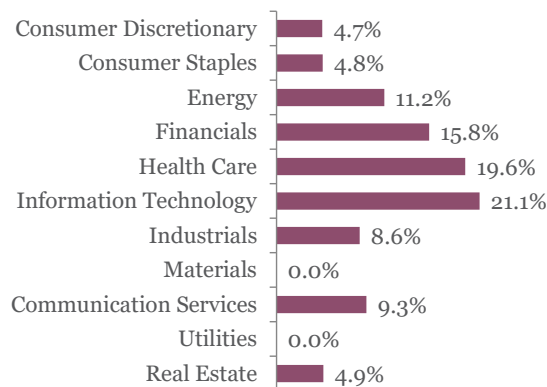
Fixed income rating breakdown



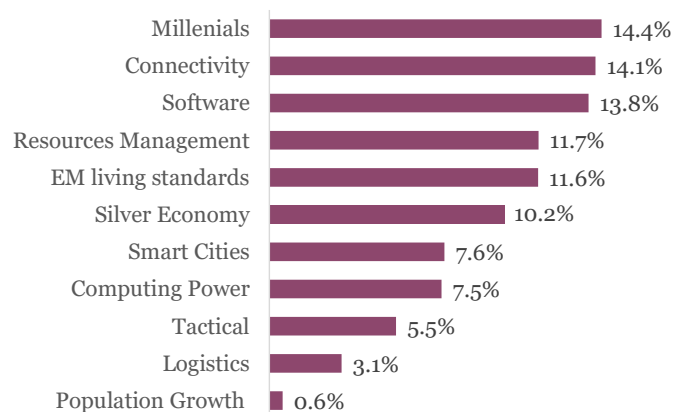
Top 10 equity holdings

	Sector	Weight
JPMORGAN CHASE & CO	Financials	2.0%
UNITEDHEALTH GROUP INC	Health Care	1.8%
BROADCOM INC	Information Technology	1.8%
FREY	Real Estate	1.6%
BANK OF AMERICA CORP	Financials	1.6%
MICROSOFT CORP	Information Technology	1.4%
UNION PACIFIC CORP	Industrials	1.4%
IQVIA HOLDINGS INC	Health Care	1.4%
SHELL PLC	Energy	1.3%
ALPHABET INC-CL A	Communication Services	1.2%

Equity sector breakdown



Thematics breakdown

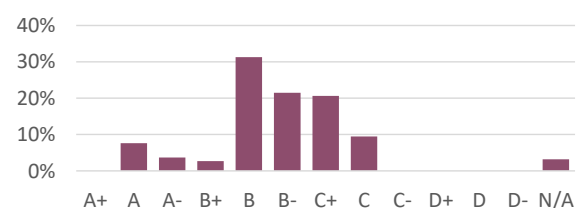


Top other holdings

ETFS PHYSICAL GOLD 3.1%

ESG Ratings

Breakdown of holdings (datasource: Thomson Reuters, ISS)



Patrimonial SRI Fund B - Acc

Monthly summary report | as at 30 September 2022

Market Review

Deteriorating growth prospects weighed heavily on financial markets in September. Central banks, constrained by lingering inflation pressures, continued to raise interest rates, adding to overall negative market sentiment. Counterintuitively, macro-economic data was still resilient with the labor market particularly strong but the outlook being the only important factor, this had virtually no impact. Quite the opposite in fact as it added to speculation that central banks will continue to tighten hard, be it at the cost of significantly deteriorating economic prospects.

Consequently, markets plummeted with the S&P 500 contracting by 9.3%, the Japanese TOPIX losing 6.5% and the European STOXX 600 retreating 6.6%. Emerging markets suffered the most, losing 11.9%, impacted heavily by the rising US dollar.

The fixed income markets weren't spared, bonds retreated across the board, from government bonds to credit markets. Eurozone Government bonds lost 3.9% while the Investment Grade Credit segment lost 3.4%.

In the foreign exchange markets, the US dollar was king as the rate differential, coupled by continuing energy issues benefited the greenback.

Portfolio Performance

The Fund lost 3.41% during the month. Falling equity prices were the main negative contributor to the performance. The fixed income part suffered as well, but yet again significantly less than the overall bond markets due to the short duration coupled with ample liquidity. Last but not least, the US dollar has somewhat cushioned the blow as the greenback gained 2.6%.

During the month we kept our overall equity exposure low, at around 37%. We maintained overweight positions in the health care and energy sectors while continuing to underweigh more cyclical consumer, utilities and materials sectors.

Market Outlook

Concerns about inflationary dynamics, continued monetary tightening and the risk of fiscal policy mistakes (particularly in the UK) led to a sharp decline in equity markets. In this context, we maintain a defensive approach.

Markets will now be watching for a further deterioration in US activity indicators and the impact of monetary tightening on demand and the labor market. Any slowdown in the monetary tightening process would be favorable for the markets. However, it is still too early to validate the central banks' pivot on monetary tightening.

On the bond side, the recent rise in rates now offers a better risk-adjusted return. The strong move in long-term rates has led us to cautiously increase the duration.

Volatility is expected to remain high and the next catalyst will probably be the upcoming quarterly corporate reports, which are not yet expected to show a sharp deterioration.

This newsletter does not constitute an offer to sell or the solicitation of an offer to purchase any security or investment product. Information herein is believed to be reliable but Midas Wealth Management does not warrant its completeness or accuracy. The opinions expressed within are entirely those of Midas Wealth Management and do not constitute an offer of investment advice. Past performance will not necessarily be repeated and is not indicative of future results. The investments discussed may fluctuate in price or value and you may not get back the amount invested. The indices shown are presented only to allow for comparison of the Midas Wealth Management funds' performance to that of certain widely recognised indices. The volatility of the indices may be materially different from the individual performance attained by a specific fund or investor. In addition, the Midas Wealth Management fund holdings may differ significantly from the securities that comprise the indices shown. Investors cannot invest directly in an index. Performance figures reflect the reinvestment of all dividends and earnings, as well as investment management, administration and performance fees. A description of the specific fee structure and risks of investing for each Midas Wealth Management fund is contained in the fund's prospectus. No part of this document may be reproduced in any manner without the prior written permission of Midas Wealth Management.

The LuxFLAG ESG Label is valid for the period ending on 31/12/2022. Investors must not rely on LuxFLAG or the LuxFLAG Label with regard to investor protection issues and LuxFLAG cannot incur any liability related to financial performance or default of this fund.

* Performance has been calculated since inception on the 17th of September 2010 of Expert Investor Sicav Midas Global Balanced Fund which merged into Midas Sicav Patrimonial Fund on the 1st of August 2016.